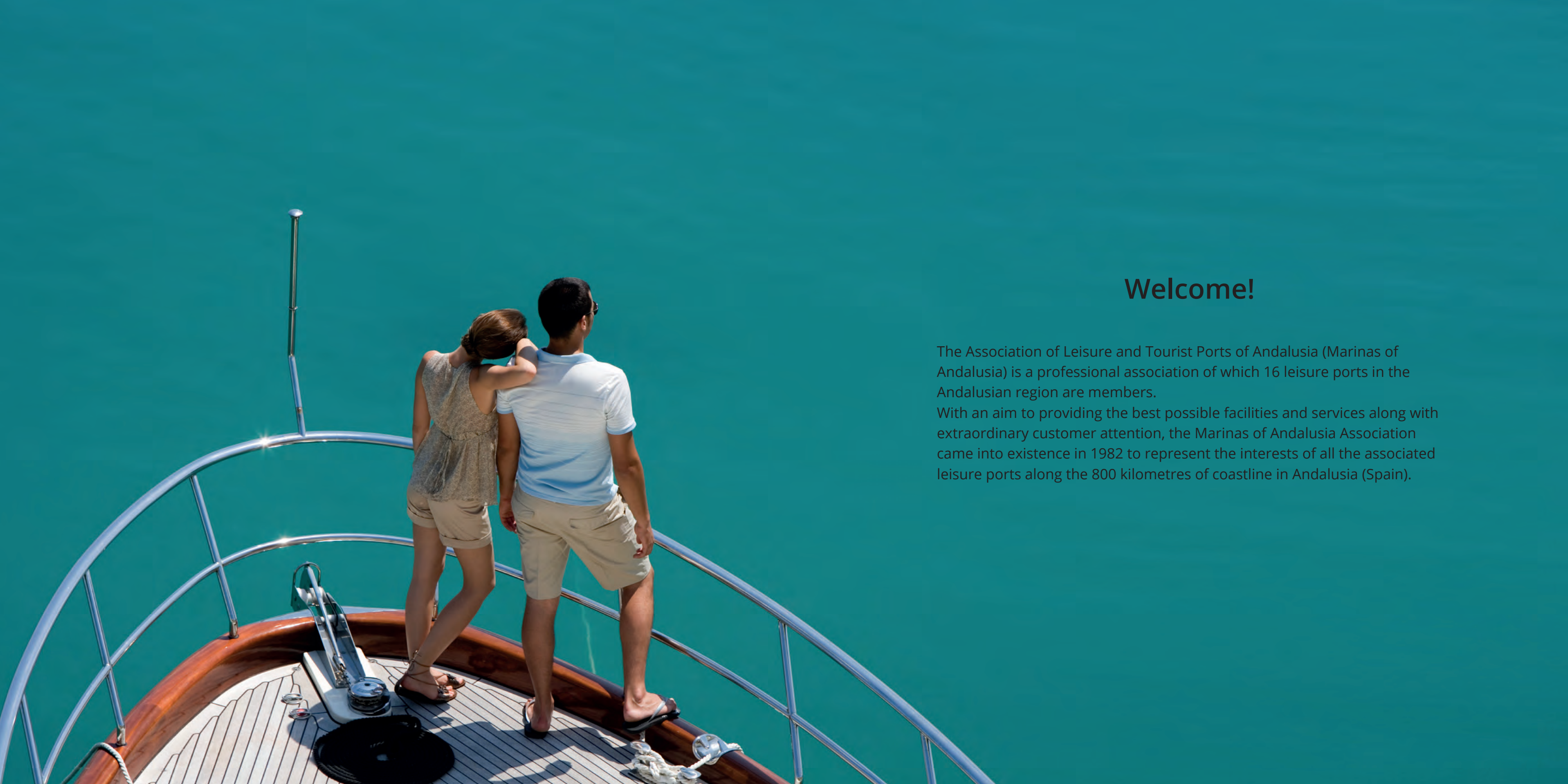




MARINAS DE ANDALUCÍA
Asociación de Puertos Deportivos

THE BEST AND MOST EXCLUSIVE
MARINAS IN SOUTHERN SPAIN





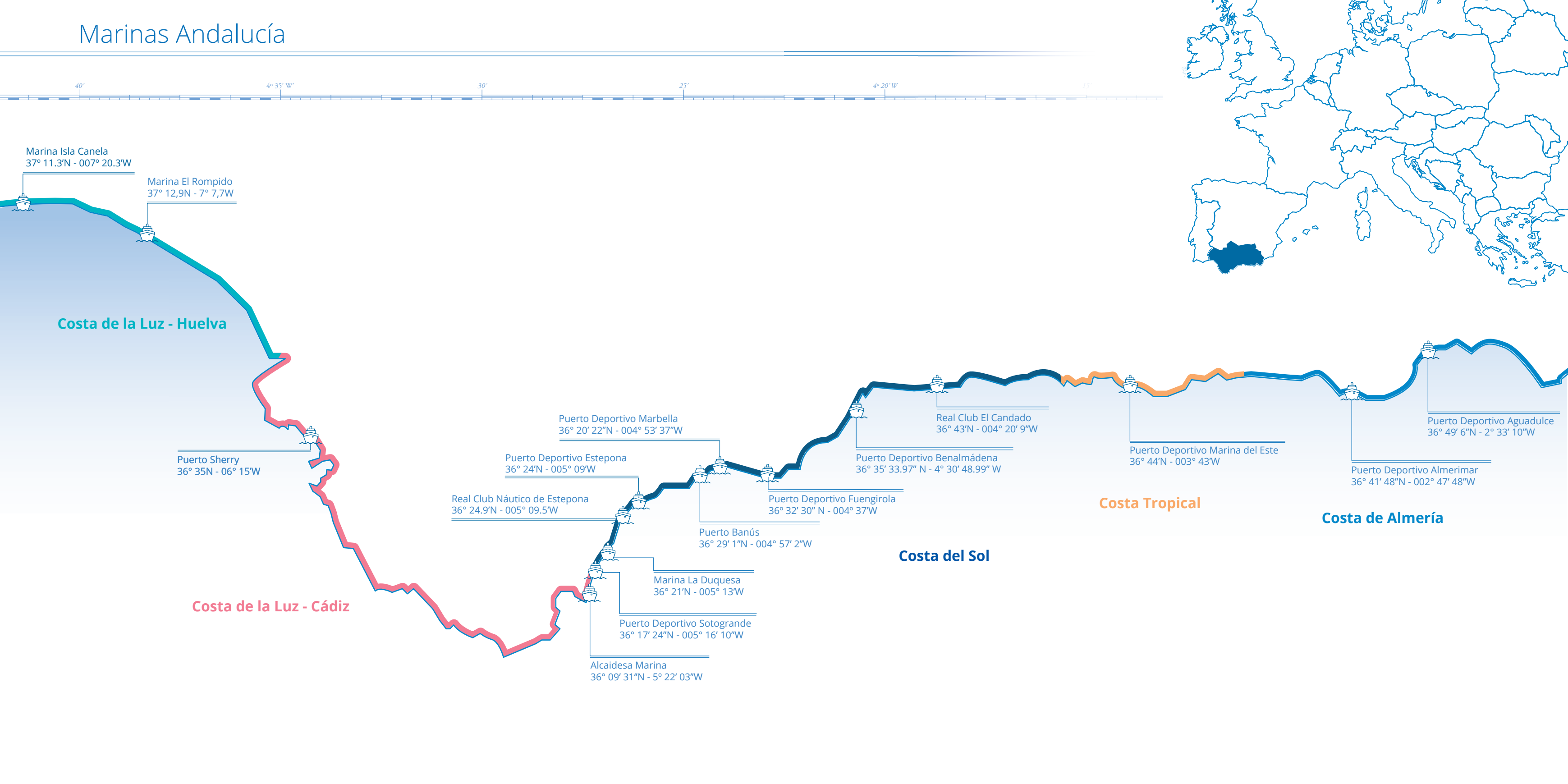
Welcome!

The Association of Leisure and Tourist Ports of Andalusia (Marinas of Andalusia) is a professional association of which 16 leisure ports in the Andalusian region are members.

With an aim to providing the best possible facilities and services along with extraordinary customer attention, the Marinas of Andalusia Association came into existence in 1982 to represent the interests of all the associated leisure ports along the 800 kilometres of coastline in Andalusia (Spain).



Marinas Andalucía



About Andalusia

Andalusia is the southernmost region of Spain. It forms a bonding bridge between two continents, Europe and Africa, and a meeting point for the Mediterranean Sea and the Atlantic Ocean. The Andalusian region has the privilege of a communications network that makes it an easy-to-reach destination: an extensive network of roads, dual carriageways and motorways; two high speed rail lines that link the centre of Andalusia with Madrid, the Spanish capital city; and an important provision of modern airports that connect Andalusia with the main Spanish, European and international capitals and cities.

It is a land of contrasts that combines impressively rich nature and scenery: the high peaks of Sierra Nevada, on which to ski; natural spaces and parks like Grazalema and the Sierra de las Nieves or Sierra de Cazorla hills; the emblematic Doñana National Park or the volcanic deserts of Tabernas in Almería.



Edging the region, the coastline of Andalusia extends along more than 800 kilometres and includes many stretches of beautiful beaches at which to enjoy nautical and maritime life which are, without a doubt, another stunning natural environment with their very own personality.

All these attractions boast an enviable climate all year round: Andalusia is the sunniest region in Spain and a large proportion of the region enjoys more than 2,800 hours of sunshine per year and has an average annual temperature of 16 degrees Celsius. Furthermore, the region has an extensive history behind it. Andalusia has been a cradle of civilisation and the scene of coexistence of different cultures which have left behind an immense artistic legacy. Heritage sites include Granada's Alhambra, Seville's Giralda and the city's historical centre and Cordoba's Mosque. There are also many museums and cultural spaces such as the Málaga Picasso Museum, Seville Fine Arts Museum, Málaga Thyssen Museum and the Andalusian Centre of Flamenco in Jerez de la Frontera.





Costa de la Luz - Huelva

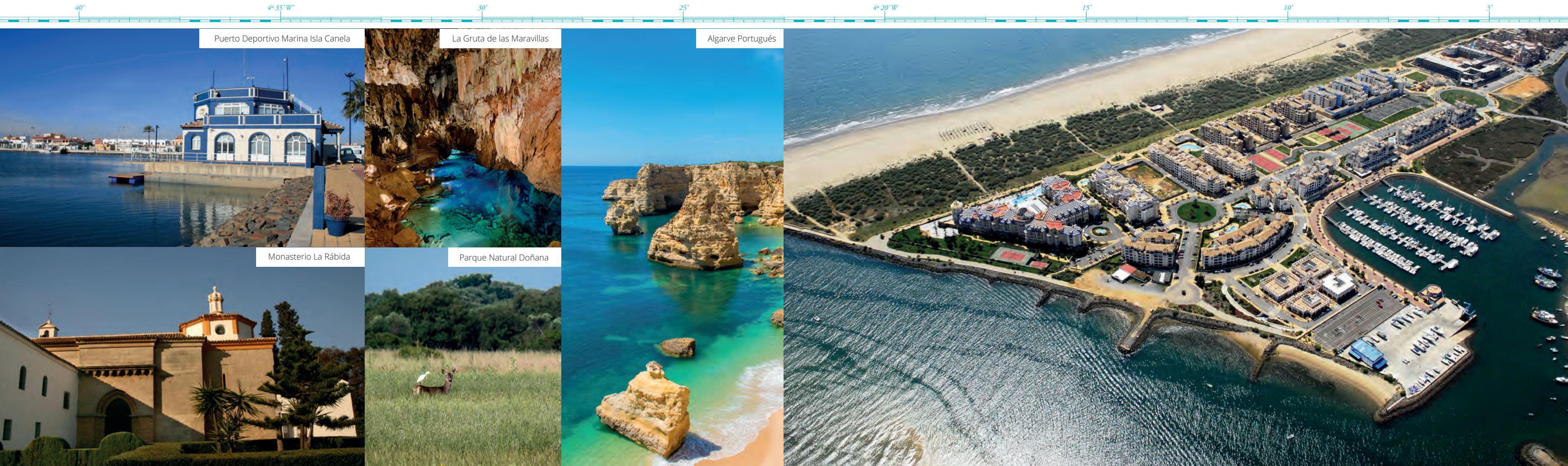
The Costa de la Luz-Huelva coast stretches from the mouth of the Guadiana river, on the border between Spain and Portugal, to the mouth of the Guadalquivir river that separates Huelva province from Cadiz province.

The Costa de la Luz's beaches, bathed by the Atlantic Ocean, are one of its flagships, and consist of seemingly endless dunes of fine golden sand and native plants, edged in some cases by pine forests. The presence of the sea as a backdrop to these landscapes leads to truly idyllic views, accompanied by sunshine practically all year round.

Visitors to the coast of Huelva will find there are two completely opposing environments: some areas perfectly equipped with tourist facilities and, in contrast, other areas which are wild and solitary. The presence of outstanding important protected natural spaces such as Doñana National Park provide a real oasis for fans of nature and those who wish to rest.

The Costa de la Luz-Huelva coast also features many leisure ports where nautical and maritime sports can be practiced at all times due to the weather conditions, which allow the sea to be enjoyed all year round.

The most important coastal areas are the municipalities of Cartaya, Ayamonte, Isla Cristina, Punta Umbría and Matalascañas, among others.



Marina Isla Canela is in Ayamonte, in Huelva province; on the spot where the Costa de la Luz coast, the Algarve and the Guadiana river meet in the southwest corner of Andalusia. Positioned right at the mouth of the Carreras river, it falls within the Isla Canela nature site, meaning it is well protected from adverse weather and provides perfect shelter to the vessels moored there. The last Spanish port on the sailing route towards the nearby Portuguese Algarve, Marina Isla Canela is within easy reach of places of special cultural interest, tourist areas and shopping centres. You will also be able to enjoy a visit to the Gruta de las Maravillas cave or discover the history kept alive by La Rábida monastery.

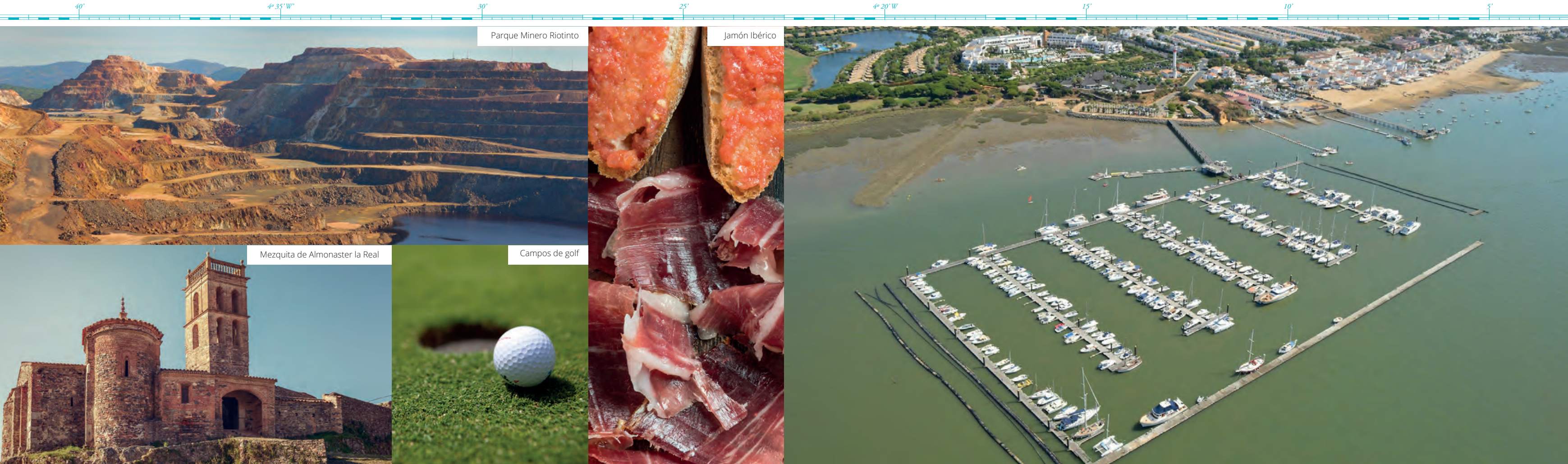
Moorings	231
Maximum length	24 m.
Min / max draft	2,5 - 4,5 m.
VHF Channel	9
Nautical chart	440 A

Paseo del pinillo s/n
21409 Ayamonte (Huelva)
T. +34 959 47 90 00 / +34 600 909 703

marina@islacanela.es
www.marina-islacanela.com

Sevillas's Airport - 140 km
Faro Portugal's Airport - 50 km

- | | | |
|---------------------|-----------------|-----------------|
| Fuel | Drinking water | WiFi |
| Bathrooms | Laundry | Crane/lift |
| Rubbish collection | Nautical sports | Commercial area |
| 24-hour security | Electricity | Wintering |
| Showers | Hoist | Restaurants |
| Used oil collection | Other sports | Blue flag |



The Marina El Rompido leisure port is located in Cartaya, in Huelva. It is a river port: its waters belong to the Piedras river, which is part of the Natural Site and Marshes of Rio Piedras and Flecha del Rompido, a nature site straddling both banks and the mouth of the river. Once on land, you will be able to enjoy the Riotinto Mining Park, where you will be able to experience a different sort of train ride, enter a mine or visit a real Victorian house. You will also be able to wander through the corridors of the Cortegana Castle-Fortress, one of the most noteworthy military buildings still preserved in the Huelva hills, or explore the history of the Mosque in Almonaster la Real.

Moorings	331
Maximum length	30 m.
Min / max draft	3 - 10 m.
VHF Channel	71
Nautical chart	D - 440

Puerto El Rompido, s/n
21459 El Rompido (Huelva)
T. +34 959 399 614 / +34 607 456 480

info@puertoelrompido.com
www.puertoelrompido.com

Sevilla's Airport - 100 km
Faro Portugal's Airport - 100 km

- Fuel
- Bathrooms
- Rubbish collection
- 24-hour security
- Showers
- Used oil collection
- Drinking water
- Nautical sports
- Electricity
- Other sports
- WiFi
- Wintering



Costa de la Luz - Cádiz

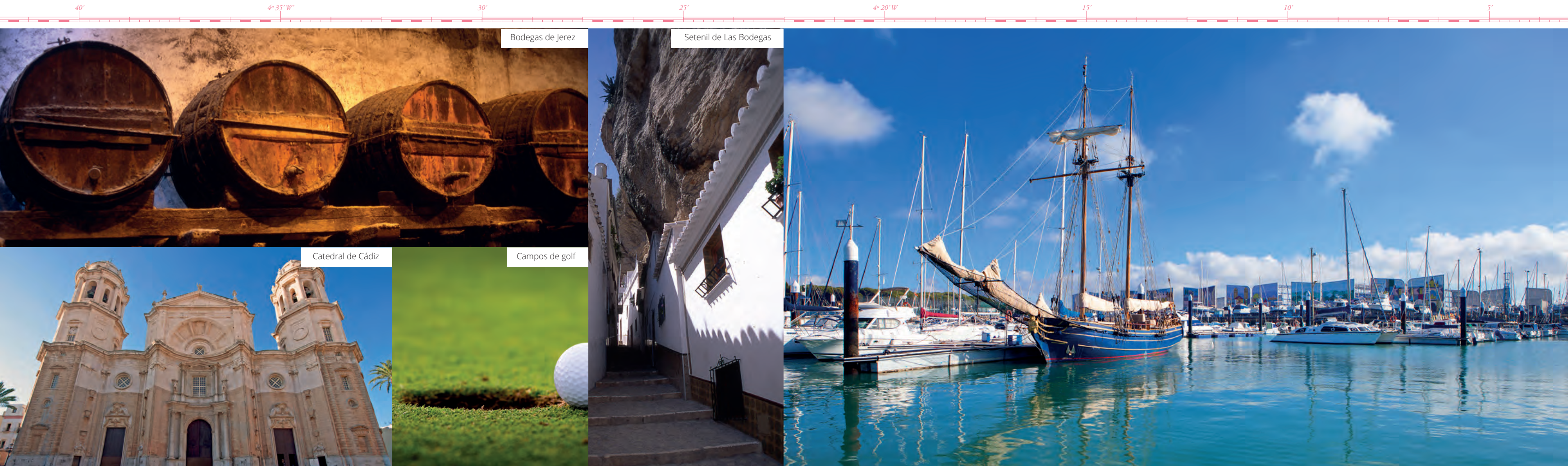
This beautiful area, the most southernmost in the Iberian Peninsula and flanked by the Atlantic Ocean, covers more than 200 kilometres of coastline along which there are many heavenly beaches of golden sand and clear waters that cause visitors to fall in love with them. The delightful landscapes are accompanied by pines, marshes and mountains.

One of the most important municipalities in Sanlúcar de Barrameda, at the mouth of the Guadalquivir river opposite Doñana National Park. The traditional horse races are held each year on its well-known Bajo de Guía beach, forming images sure to remain in our minds of horses against the backdrop of the unique sunsets these beaches regale us with.

Beaches along the Cádiz coast like Tarifa or El Palmar are internationally renowned as ideal places for surf, windsurf, kitesurf and other sea-related sports such as underwater fishing.

Other main municipalities along the coast of Cádiz are Puerto de Santa María, Chipiona, Rota, Barbate, Chiclana and Puerto Real, all of which are equipped for visitors with modern tourist infrastructures.

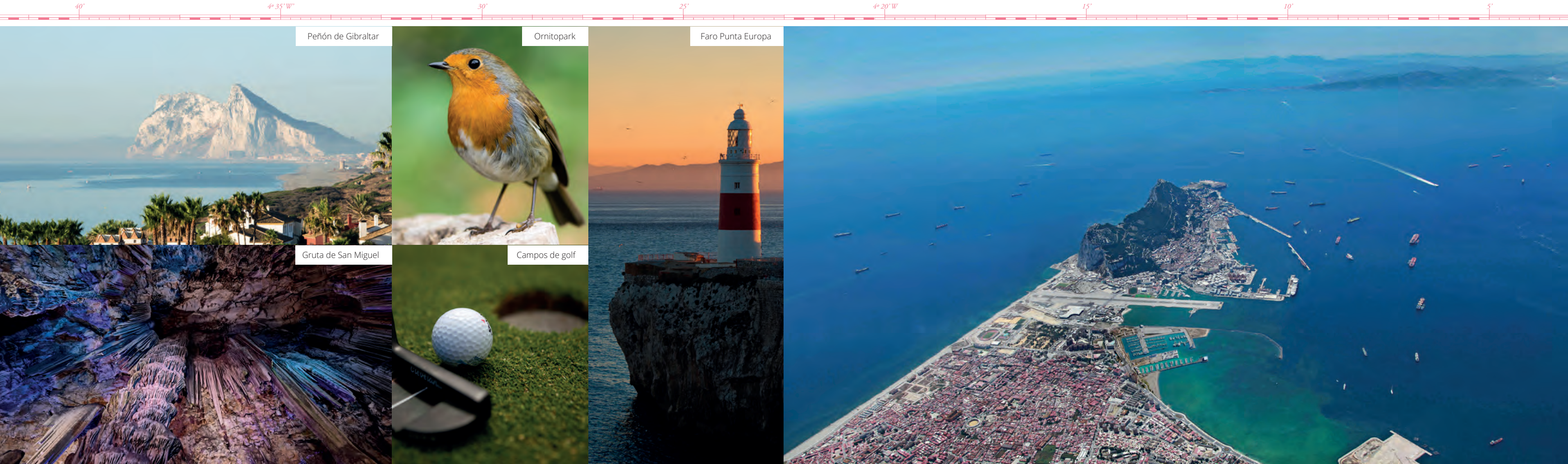
The Costa de la Luz-Cádiz, just like the Huelva coast, combines fully equipped tourist resorts with paradisiacal areas that remain wild and virgin.



Puerto Sherry is a magnificent leisure port located in El Puerto de Santa María, in the Bay of Cádiz, a compulsory place of passage for those crossing the Straits of Gibraltar. At this marina you will find the perfect place to combine nautical activities and leisure all year round. You will also be able to enjoy local cuisine at the Central Market or wander the marvellous streets of El Puerto de Santa María as far as the Santa Catalina Fort. A visit to Setenil de las Bodegas, in the Cádiz hills, is a must. This town in the province of Cádiz is famous for the singularity and beauty of its urban framework: the houses are dug from the mountains and the roofs are the actual rocks.

Moorings	842
Maximum length	70 m.
Min / max draft	3 - 6 m.
VHF Channel	9
Nautical chart	443 A
Avda. de la Libertad, s/n 11500 (Cádiz) T. +34 956 87 01 03 repcionpuerto@puertosherry.com www.puertosherry.com Jerez's Airport - 30 km	

- | | | |
|---------------------|-----------------|-----------------|
| Fuel | Drinking water | WiFi |
| Bathrooms | Laundry | Crane/lift |
| Rubbish collection | Nautical sports | Commercial area |
| 24-hour security | Electricity | ATMs |
| Showers | Hoist | Wintering |
| Used oil collection | Other sports | Restaurants |



The Alcaidesa Marina leisure port is located just to the west of Gibraltar, in a natural dock, where the Mediterranean Sea welcomes visiting sailors. It belongs to the Cádiz town of La Línea de la Concepción and its privileged position, within the bay of Algeciras, makes it an ideal port both to serve as a base for longer stays or as a stop-off point during transit. It offers a golf course than runs parallel to the beach, shopping centres and leisure areas. The magnificent, strategically placed natural enclave of Alcaidesa Marina is complemented by long stretches of golden, sandy beaches and adventure activities. Gibraltar is home to Europa Point, one of the most famous lookout points with views of the end of Spain and the beginning of Africa, and also to St Michael's Cave, a stunning cavity in the rocks.

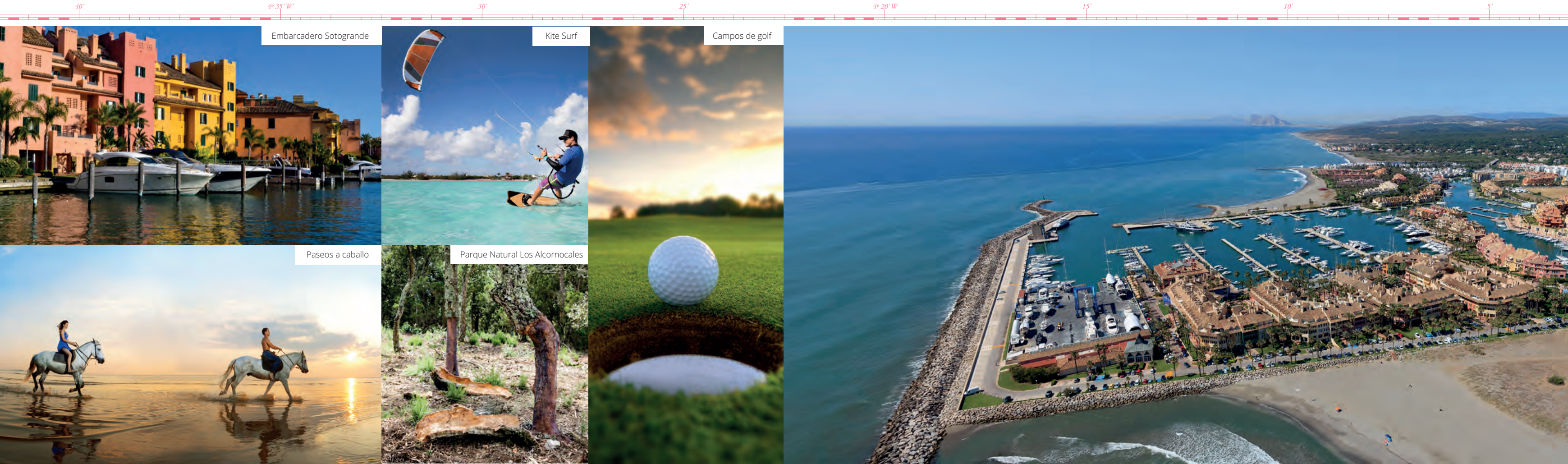
Moorings	624
Maximum length	90 m.
Min / max draft	5 m.
VHF Channel	9
Nautical chart	4452

Avda. Príncipe de Asturias, s/n
11300 La Línea de la Concepción (Cádiz)
T. +34 956 02 16 60

marina@alcaidesa.com
www.alcaidesamarina.com

Gibraltar's Airport - 2 km

- | | | |
|---------------------|-----------------|-------------|
| Fuel | Drinking water | WiFi |
| Bathrooms | Laundry | Crane/lift |
| Rubbish collection | Nautical sports | Wintering |
| 24-hour security | Electricity | Restaurants |
| Showers | Hoist | Blue flag |
| Used oil collection | Other sports | |



This port is located at the eastern entrance to the Straits of Gibraltar, in the exclusive and well-known residential complex of Sotogrande, within the Cádiz municipality of San Roque. This tourist destination boasts attractions all year round, from its legendary golf courses to kitesurfing on the beach or hiking in autumn. Sotogrande is a place where your days can be designed to suit your tastes. You can walk, horse ride and fish all year long and head into the countryside that makes up the two nature parks in the area: Los Alcornocales and the Guadiaro River Nature Site. A stop here is vital for boats that are about to set off on an Atlantic crossing, as well as for those vessels that are returning from one and preparing to sail in the Mediterranean Sea.

Moorings	1380
Maximum length	70 m.
Min / max draft	3 - 3,80 m.
VHF Channel	9
Nautical chart	D - 453

Torre de Control, s/n
11310 Sotogrande (Cádiz)
T. +34 956 79 00 00

puertosotogrande@puertosotogrande.com
www.puertosotogrande.com

Málaga's Airport - 100 km
Jerez's Airport - 120 km
Gibraltar's Airport - 25 km

- | | | |
|---------------------|-----------------|-----------------|
| Fuel | Laundry | Commercial area |
| Bathrooms | Nautical sports | ATMs |
| Rubbish collection | Electricity | Wintering |
| 24-hour security | Hoist | Restaurants |
| Showers | Other sports | Blue flag |
| Used oil collection | WiFi | Hotels |
| Drinking water | Crane/lift | Health services |

Costa del Sol

The Costa del Sol runs along more than 150 kilometres throughout the province of Málaga. Its name is far from a coincidence as it enjoys more than 325 days of sunshine per year, pleasant weather and average temperatures of 19 degrees Celsius. This has helped it become one of the most important tourist areas in Spain.

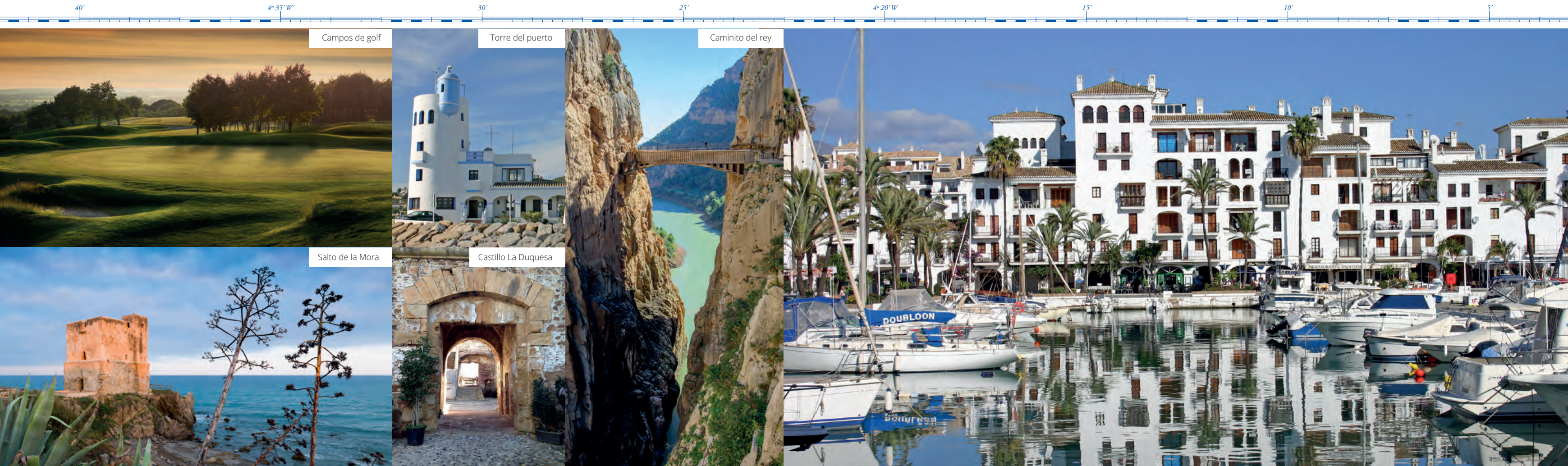
On the Costa del Sol you will find beaches suited to all tastes: some quiet, some busy, some wild and others equipped with the latest in services for visitors' comfort. This coast also stands out for its rich landscape with many of its beaches stretching between the mountains and the sea.

Natural landscapes such as those of Maro-Cerro Gordo, the famous Nerja caves and well-known municipalities like Estepona, Marbella, Torremolinos, Manilva and Fuengirola, among others, make this coast an ideal holiday destination.

The westernmost part of the Costa del Sol concentrates a high percentage of the hotel beds in Andalusia and is equipped with many tourist services, including moorings at various leisure ports, leisure and theme parks and important cultural events. The majority of Andalusia's golf courses are also located here, earning it the nickname of the Costa del Golf.

Communications are another of the Costa del Sol's privileges: the area possesses an important road network, airports and a high speed rail link.





The Port of La Duquesa is a beautiful Mediterranean style leisure port, located in the Málaga municipality of Manilva. With its tranquil beaches and pleasant weather all year round, we are undoubtedly talking of one of the best ports on the Costa del Sol. La Duquesa is the most westerly port in the province of Málaga, close to the edge of Cádiz province. It is very close to one of the areas with the highest concentration of golf courses in the world. At this seaside village, diverse activities can be enjoyed and the cultures of other civilisations that lived on these coasts discovered. You will be able to visit the Torre del Salto de la Mora tower, a bastion of the Muslim era; enjoy sulfur baths of Roman origins such as the Baños de la Hedionda, declared an Asset of Cultural Interest, or explore the world of wine due to the area’s tradition of vineyards and wine-making.

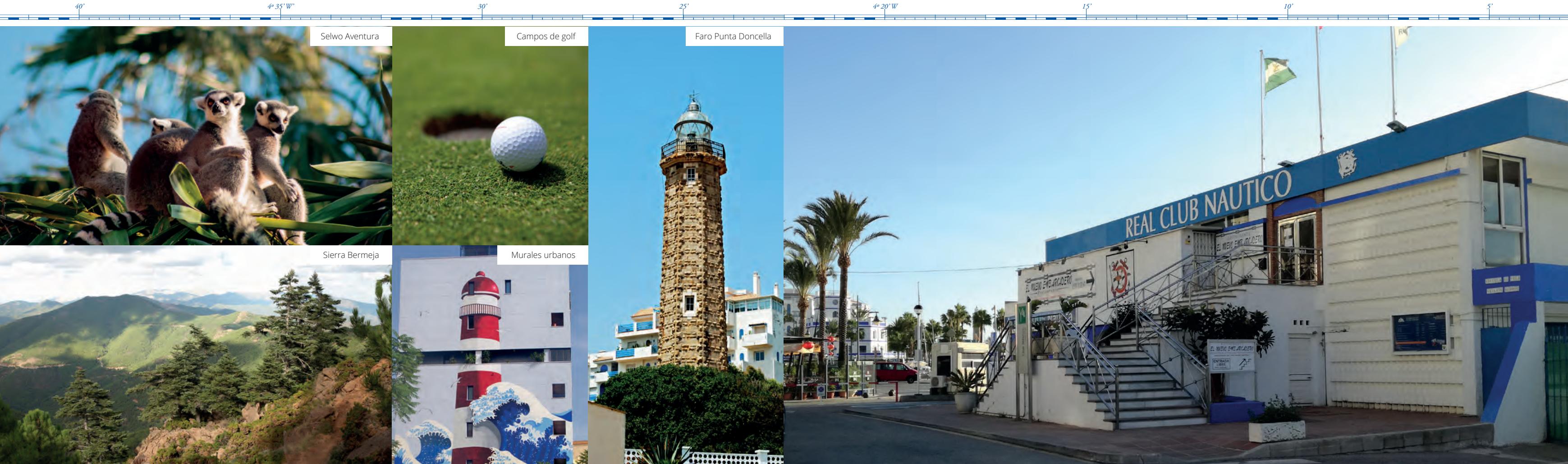
Moorings	328
Maximum length	20 m.
Min / max draft	1,2 - 3 m.
VHF Channel	9
Nautical chart	D - 453

Torre de Control, s/n
29692 Manilva (Málaga)
T. +34 952 89 01 00

duquesa@marinasmediterraneo.com
www.marinasmediterraneo.com

Málaga’s Airport - 95 km
Gibraltar’s Airport - 30 km

- | | | |
|---------------------|-----------------|-----------------|
| Fuel | Laundry | Commercial area |
| Bathrooms | Nautical sports | ATMs |
| Rubbish collection | Electricity | Wintering |
| 24-hour security | Hoist | Restaurants |
| Showers | Other sports | Blue flag |
| Used oil collection | WiFi | |
| Drinking water | Crane/lift | |



The Real Club Náutico Estepona is a Social Club which has a restaurant, a jetty for mooring the members' vessels and a ramp/esplanade to be used by the sailing school. The sporting activity at the Real Club Náutico Estepona is centred on its Sailing School. The sailing lessons are suitable for all ages. You can also hire light sailing dinghies (Optimists or Lasers) or kayaks to spend the day at sea, or join in the Cruise Sailing classes. For fans of fishing, the Estepona nautical club also offers recreational fishing. All this can be combined with the wide variety of cultural activities available in the town, as well as an important selection of restaurants, typical bars and beach bars along the extensive beaches, where you can also enjoy the Mediterranean sun.

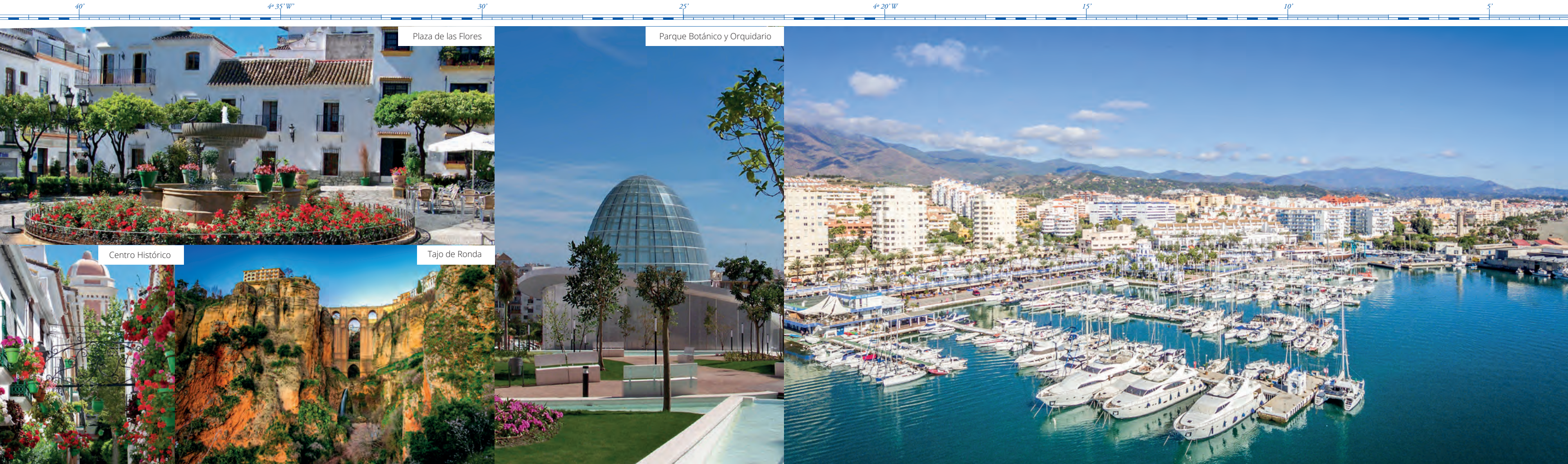
Moorings	36
Maximum length	10 m.
Min / max draft	0,5 - 2,5 m.
VHF Channel	9
Nautical chart	D - 454

Puerto Deportivo Estepona
29680 Estepona (Málaga)
T. +34 952 80 09 54 / +34 625 14 24 65

info@rcne.es
www.rcne.es

Málaga's Airport - 83 km
Gibraltar's Airport - 50 km

- Fuel
- Bathrooms
- Rubbish collection
- 24-hour security
- Showers
- Used oil collection
- Drinking water
- Laundry
- Nautical sports
- Electricity
- Hoist
- Other sports
- WiFi
- Crane/lift
- Commercial area
- ATMs
- Restaurants
- Blue flag



Estepona's leisure port is located very close to the town centre, which makes it even more interesting for visitors who wish to enjoy the benefits of this beautiful Costa del Sol municipality. The port area has a great variety of restaurants, supermarket and nautical services. The Orchid centre, the largest in Europe boasting more than 4,000 different species, is found close to the port. A market is held every week in the leisure port which is very popular with locals and also a great tourist attraction. Golf courses, the urban murals route, a beautiful town centre decked with flowers, its close proximity to charming villages such as Ronda and the beauty of the Los Reales de Sierra Bermeja Nature Site add to the list of attractions of this area.

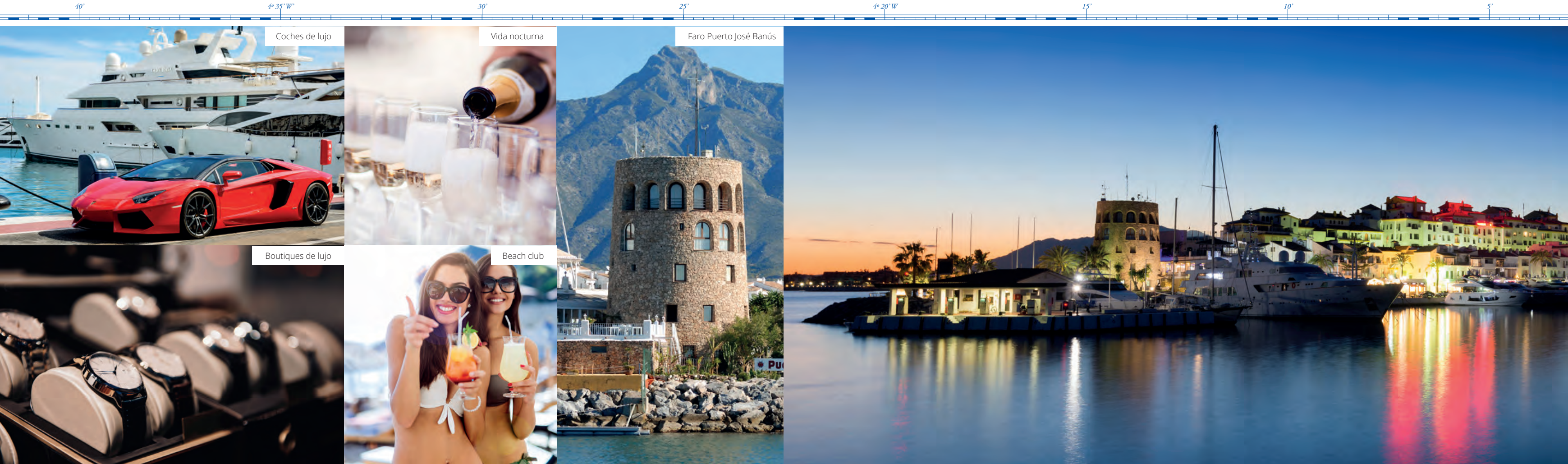
Moorings	447
Maximum length	35 m.
Min / max draft	0,5 - 3,9 m.
VHF Channel	9
Nautical chart	D - 454

Torre de Control, s/n
29680 Estepona (Málaga)
T. +34 952 80 18 00

estepona@marinasmediterraneo.com
www.marinasmediterraneo.com

Málaga's Airport - 83 km
Gibraltar's Airport - 50 km

- | | | |
|---------------------|-----------------|-----------------|
| Fuel | Drinking water | WiFi |
| Bathrooms | Laundry | Crane/lift |
| Rubbish collection | Nautical sports | Commercial area |
| 24-hour security | Electricity | ATMs |
| Showers | Hoist | Restaurants |
| Used oil collection | Other sports | Blue flag |



Puerto Banús is the most famous nautical and tourist enclave in southern Europe. This port area is really more of a town within another great town, that of Marbella. Banús is also part of the history of tourism and sailing in Spain. To say Puerto Banús is to speak of luxury, sport, glamour, culture, commerce and especially people. With more than five million visitors per year, Puerto Banús has become one of the main European luxury enclaves where tourists come not only to enjoy the sun and the sea but also to visit the premises of the most exclusive brands, which are spread around the port. Yachts and enormous vessels belonging to businesspeople and royal families line the docks.

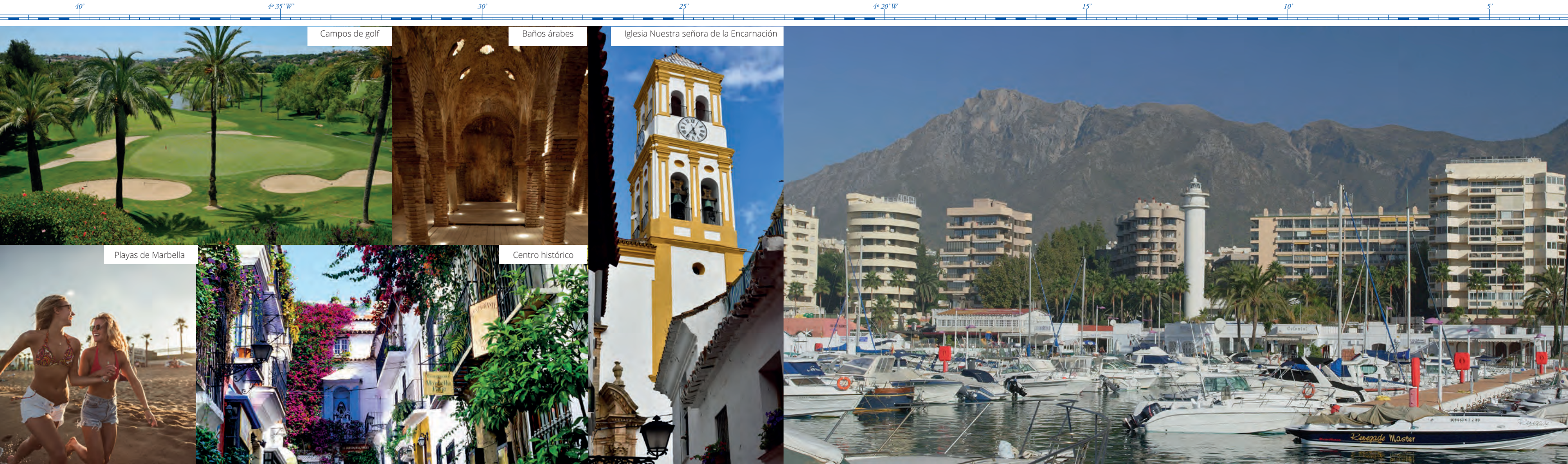
Moorings	915
Maximum length	50 m.
Min / max draft	4 m.
VHF Channel	9
Nautical chart	D - 454

Nueva Andalucía,
29660 Marbella (Málaga)
T. +34 952 90 98 00

torrecontrol@puertobanus.com
www.puertobanus.com

Málaga's Airport - 55 km

- | | | |
|---------------------|-----------------|-----------------|
| Fuel | Drinking water | Crane/lift |
| Bathrooms | Nautical sports | Commercial area |
| Rubbish collection | Electricity | ATMs |
| 24-hour security | Hoist | Restaurants |
| Showers | Other sports | |
| Used oil collection | WiFi | |



Due to its location in the very heart of the town, Marbella's leisure port is frequented by locals and also much visited by tourists. The pleasant atmosphere of its bars, proximity to the beaches and wide range of nautical competitions, regattas and sailing lessons for children make this an interesting place to visit. It is structured on two levels: the "terraces of the port", which often host events and shows, are on top and the premises and nautical facilities are below, along with the Club. The beaches of Marbella are dotted with well-known Beach Clubs at which a different sort of day on the beach combining gastronomy, live music and luxurious comforts can be enjoyed. Marbella also has many places of interest for tourists such as the Parque de la Alameda park, the Bonsai Museum or the Rio Verde Roman Villa. And for fans of golf, Marbella has many high quality golf courses.

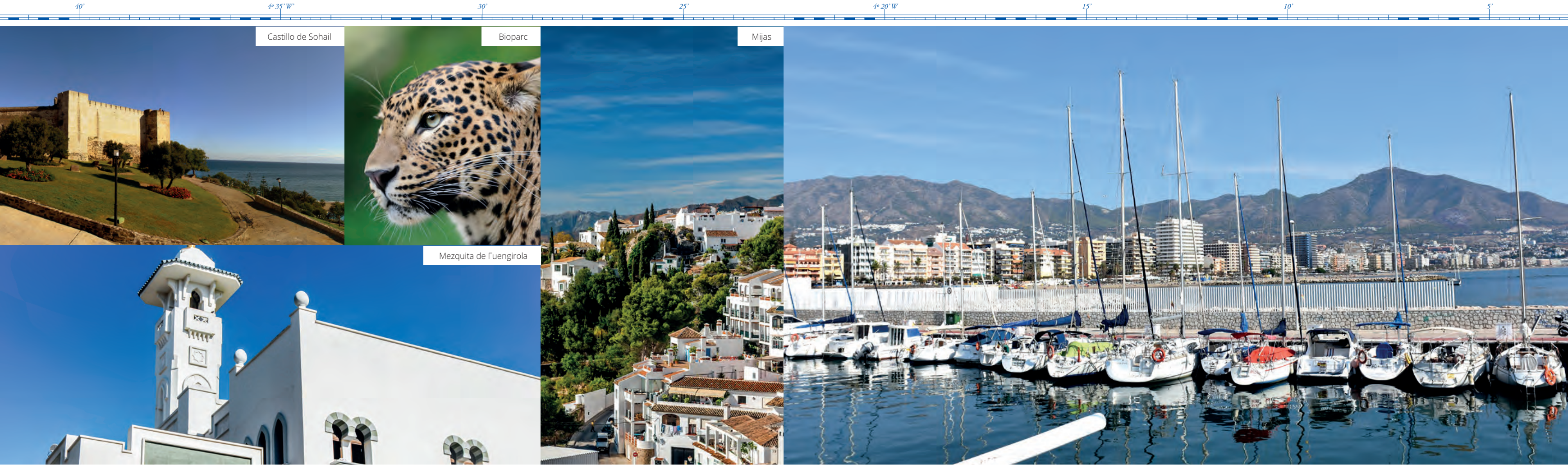
Moorings	337
Maximum length	20 m.
Min / max draft	2,5 - 3,5 m.
VHF Channel	9
Nautical chart	D - 454

Paseo marítimo, s/n - Edif. Capitanía
29600 Marbella (Málaga)
T. +34 952 77 55 24

puertodeportivo@marbella.es
www.marbella.es/puertodeportivo

Málaga's Airport - 66 km

- | | | |
|---------------------|-----------------|-----------------|
| Fuel | Drinking water | Crane/lift |
| Bathrooms | Nautical sports | Commercial area |
| Rubbish collection | Electricity | ATMs |
| 24-hour security | Hoist | Restaurants |
| Showers | Other sports | Blue flag |
| Used oil collection | WiFi | |



This leisure port is located in one of the best spots on the Andalusian coast, at the centre of the seafront promenade in Fuengirola, also known as the White Town (Villa Blanca). There is a wide range of restaurants with pleasant terraces within the port as well as plenty of bars. Those wishing to play other sports like golf or go horse riding will find excellent facilities within a short distance. You will also be able to enjoy flora and fauna with a visit to the Bioparc Reserve, a zoo designed for all members of the public right in the middle of the town. Before leaving, don't miss out on a chance to visit the Mosque or Sohail Castle to learn about the history of this magnificent town. Its close proximity to Málaga makes this port an interesting and strategic place for those who wish to discover everything the provincial capital has to offer.

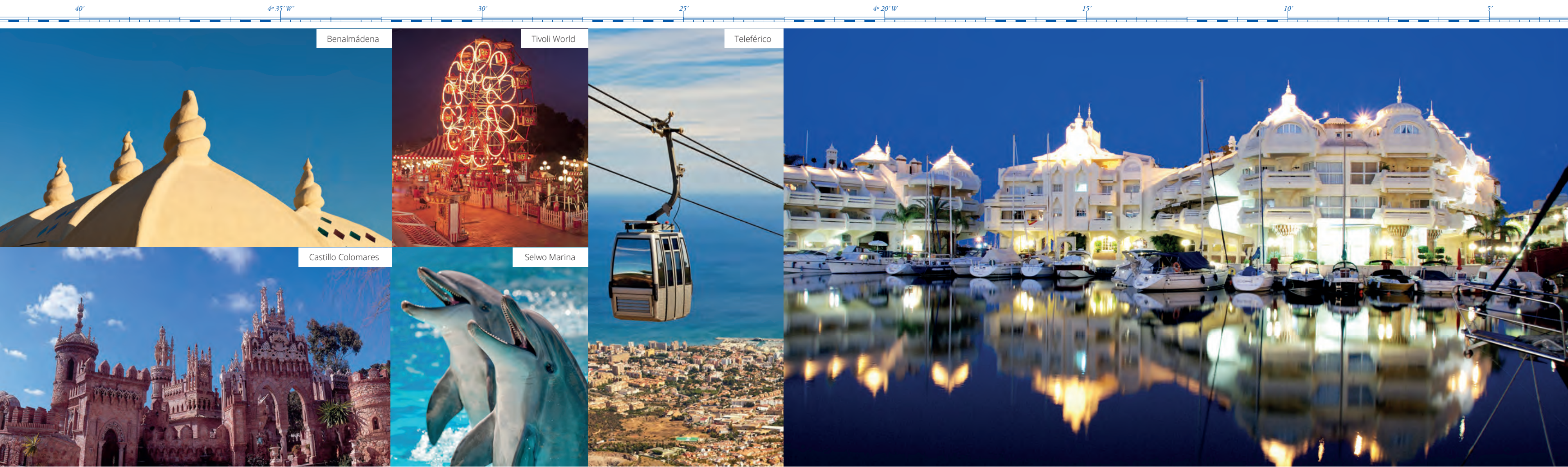
Moorings	226
Maximum length	20 m.
Min / max draft	3 - 3,5 m.
VHF Channel	9
Nautical chart	D - 45A

Torre de control, Zona deportiva,
Puerto de Fuengirola
29640 Fuengirola (Málaga)
T. +34 952 46 80 00

puertofuengirola@gmail.com
www.puertodeportivofuengirola.es

Málaga's Airport - 22 km

- Fuel
- Bathrooms
- Rubbish collection
- 24-hour security
- Showers
- Used oil collection
- Drinking water
- Nautical sports
- Electricity
- Hoist
- Other sports
- WiFi
- Crane/lift
- Commercial area
- ATMs
- Wintering
- Restaurants



Benalmádena's leisure port is located at the very heart of the Costa del Sol, in a privileged spot just 8 kilometres from Málaga-Pablo Ruiz Picasso International Airport, which has daily connections to the main Spanish and European cities. Its climate allows for all sorts of activities, sports and tourist trips all year round. In the vicinity of this leisure port there are various leisure and entertainment options such as Tivoli World amusement park, zoos such as Selwo Marina or the Sea Life Aquarium within the port itself, or the cable car for spectacular views.

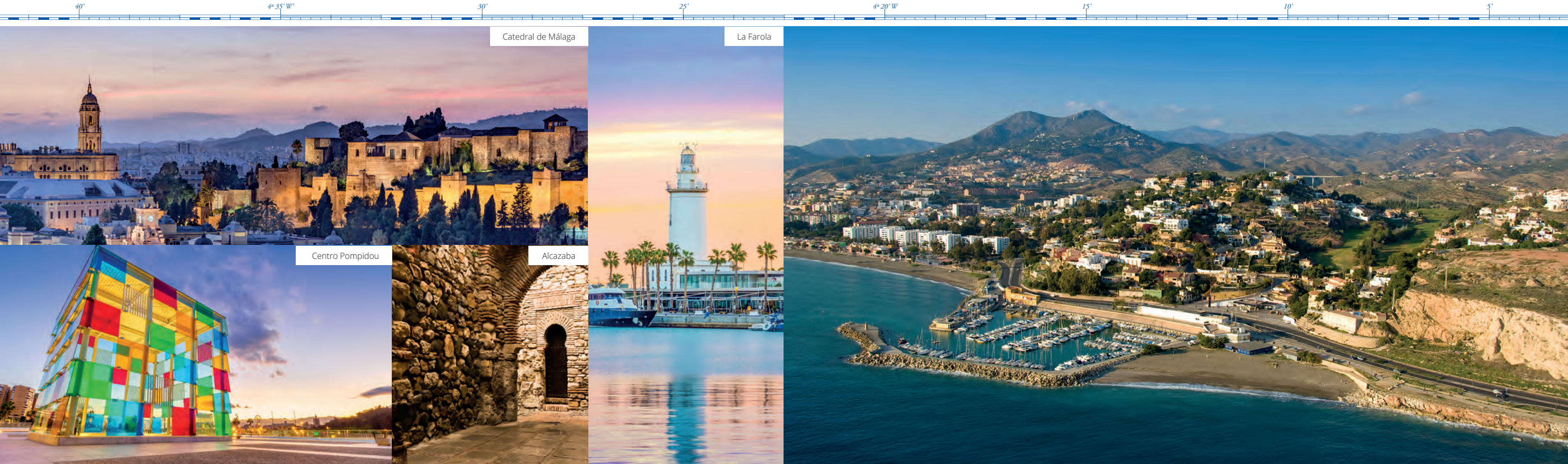
Moorings	1045
Maximum length	35 m.
Min / max draft	3 - 5 m.
VHF Channel	9
Nautical chart	D - 455

Av. Juan Sebastián Elcano, s/n
29630 Benalmádena (Málaga)
T. +34 952 57 70 22

info@puertobenalmadena.org
www.puertobenalmadena.es

Málaga's Airport 15 km

- | | | |
|---------------------|-----------------|-----------------|
| Fuel | Laundry | Commercial area |
| Bathrooms | Nautical sports | ATMs |
| Rubbish collection | Electricity | Wintering |
| 24-hour security | Hoist | Restaurants |
| Showers | Other sports | Blue flag |
| Used oil collection | WiFi | |
| Drinking water | Crane/lift | |



El Candado, a contained and harmonious leisure port, is situated in the eastern part of the capital city of the Costa del Sol. The sports and social club located within the port has leisure facilities which include a gymnasium, tennis courts and swimming pools. Sailing, diving activities and windsurfing, as well as other sports such as paddle tennis, golf or tennis can all be enjoyed within these privileged surroundings. Thanks to its location, just 5 kilometres from the Málaga capital, you can enjoy different cultural proposals such as a visit to the Picasso Museum or the Pompidou Centre, go up to Gibralfaro Castle or visit the Cathedral of Málaga, known as La Manquita (little one-armed one) due to its incomplete structure.

Moorings	285
Maximum length	15 m.
Min / max draft	1 - 2,8 m.
VHF Channel	9
Nautical chart	D - 455

Playa de Almellones, s/n
29018 Málaga
T. +34 952 29 60 97

administracion@clubelcandado.com
www.clubelcandado.com

Málaga's Airport - 5 km

- Fuel
- Bathrooms
- Rubbish collection
- 24-hour security
- Showers
- Used oil collection
- Drinking water
- Nautical sports
- Electricity
- Other sports
- Crane/lift
- Commercial area
- Wintering
- Restaurants



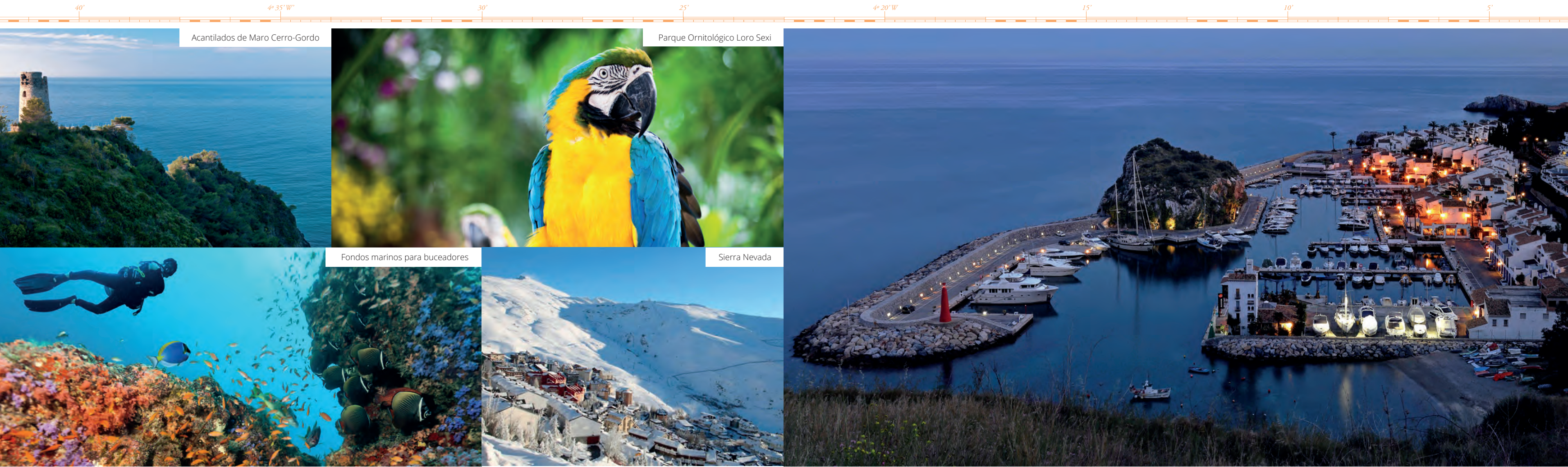
Costa Tropical

This coast is situated between the Costa del Sol and the coast of Almería, in the province of Granada. Its strategic location, close to Africa and sheltered and protected from northern winds by the Sierra Nevada mountains, provides it with a subtropical microclimate with more than 320 days of sunshine per year and an average annual temperature of 20 degrees Celsius. Without a doubt, a coastline which has the best conditions and attractions for excellent holidays.

The scenery on the Costa Tropical is enormously beautiful with cliffs, bays and extensive beaches. The marine life and the waters of this area fall within the protected nature area of the cliffs of Maro-Cerro Gordo.

This coast has five tourist centres: Almuñécar (La Herradura), Salobreña, Motril, Castell de Ferro and La Rábita. These resorts have modern facilities and an ideal tourism infrastructure to provide for fun holidays in a privileged area. Plus, the Costa Tropical has leisure ports and places to practice many nautical sports, as well as cliffs and natural bays with crystal clear waters. Undoubtedly an ideal location for diving and scuba diving, fishing, sailing, surfing, water-skiing and playing tennis or golf.

To top off this extensive offer, just 40 kilometres away the Sierra Nevada mountains climb to an altitude of 3,400 metres, providing skiing fans with a nearby paradise.



Marina del Este leisure port is situated in La Herradura (Almuñécar), in a privileged enclave between the sea and the mountain. Its unusual design and construction perfectly and harmoniously combine the docks with the natural rocky outcrops. La Herradura is the last village on the Granada coast before entering Málaga province. It has magnificent beaches and hidden bays in the Maro-Cerro Gordo area. The quality of its waters and sea beds is outstanding, and has made this a privileged area for fans of diving and scuba diving, as it falls within in the Natural Marine Reserve of the Maro-Cerro Gordo Cliffs, named as a Protected Marine Area by UNESCO.

Moorings	227
Maximum length	30 m.
Min / max draft	1,8 - 3,7 m.
VHF Channel	9
Nautical chart	456

Torre de Control,
18697 La Herradura (Granada)
T. +34 958 64 08 01

marinaeste@marinasmediterraneo.com
www.marinasmediterraneo.com

Málaga's Airport - 84,5 km

- Fuel
- Bathrooms
- Rubbish collection
- 24-hour security
- Showers
- Used oil collection
- Drinking water
- Laundry
- Nautical sports
- Electricity
- Hoist
- Other sports
- WiFi
- Crane/lift
- Commercial area
- ATMs
- Wintering
- Restaurants
- Blue flag

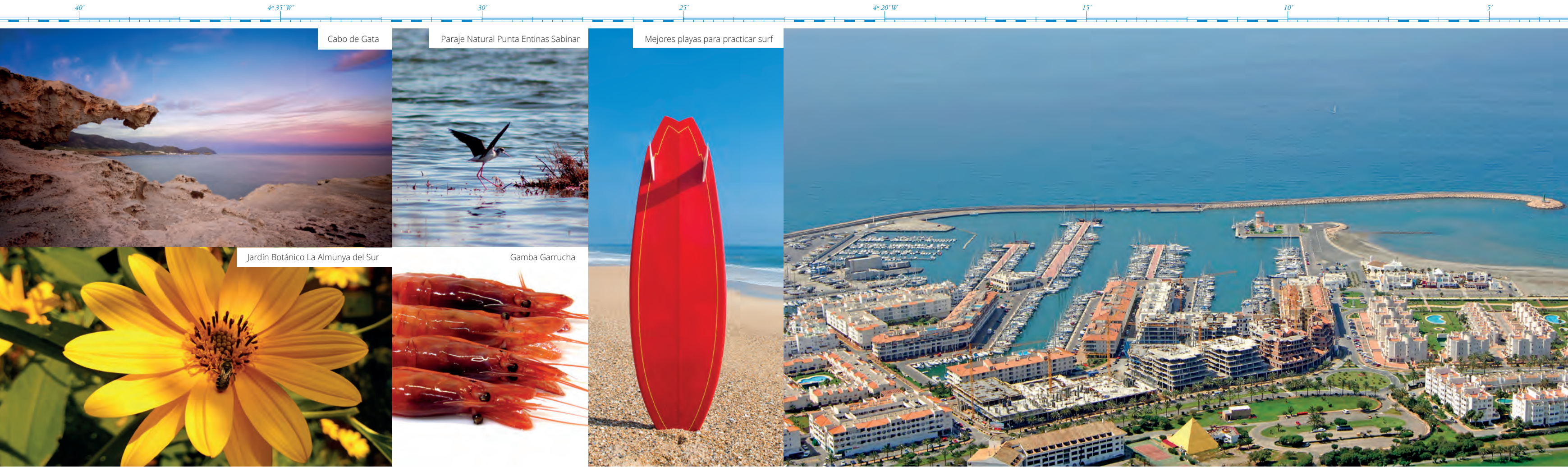


Costa de Almería

The coast of Almería is edged by the Mediterranean Sea along its more than 200 kilometres, most of which are natural landscapes. The scenery along this coastline is very special and, heading inland, a lot of the countryside is arid, desert terrain and is little populated. The well-known Tabernas desert, famous for being the location where very famous Western movies were filmed, is of particular note. Elsewhere, kilometres and kilometres of greenhouses can be seen and beaches of fine sand contrast with wild, rugged cliffs.

The main nature area is the protected nature and maritime reserve of Cabo de Gata-Níjar, a paradisiacal area of deserted virgin beaches and sand dunes. A coastline dotted with idyllic bays with crystal clear waters, ideal for swimming and for fans of diving, along with headlands that provide marvellous panoramic views of the Mediterranean Sea.

The western part of the coast is home to municipalities such as Adra, Roquetas de Mar, Almerimar and Aguadulce, all well-known tourist destinations that offer all the comforts of a modern tourist resort with extensive beaches and magnificent hotels and facilities for sports including golf, tennis, sailing, diving or windsurfing, as well as various leisure ports at which to enjoy the nautical life. Vera and Mojácar, also very important tourist resorts in this area, complete the wide range of options for pleasure and leisure.



Almerimar, located in El Ejido, Almería, is one of the great leisure ports of the Andalusian coast, in fact it is the second most important, on the Almería coastline. It has the necessary infrastructure, as well as ideal weather conditions, for practice of any sport: sailing, windsurf, diving, fishing, golf, etc. Just a few kilometres away is Punta de Baños, one of the best beaches on the coast for surfing. Once on land, we can visit the Cabo de Gata-Níjar Natural Park, the largest protected space on the Mediterranean coast. Another of the nature reserves we can enjoy in this area is the nature site of Punta Entinas-Sabinar, where we can discover the diversity and singularity of the flora and fauna of Southern Spain.

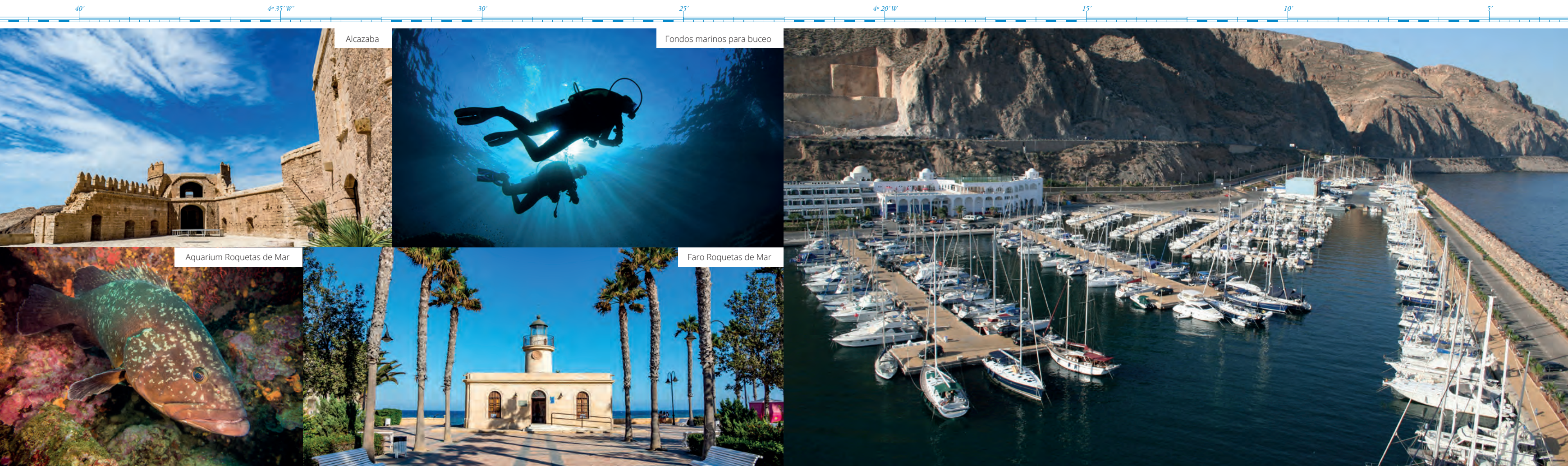
Moorings	997
Maximum length	6 - 60 m.
Min / max draft	2,8 - 6 m.
VHF Channel	9
Nautical chart	D - 458

Puerto Deportivo Almerimar, s/n
04711 El Ejido (Almería)
T. +34 950 49 73 50

infomarina@almerimarpuerto.com
www.almerimarpuerto.com

Málaga's Airport - 45 km

- | | | |
|---------------------|-----------------|-----------------|
| Fuel | Drinking water | Crane/lift |
| Bathrooms | Laundry | Commercial area |
| Rubbish collection | Nautical sports | Wintering |
| 24-hour security | Electricity | Restaurants |
| Showers | Hoist | |
| Used oil collection | WiFi | |



The leisure port of Aguadulce is found in the municipality of Roquetas de Mar, just 8 kilometres from the capital. This port houses a great variety of restaurants and has become one of the most emblematic leisure areas in Almería province. The area is well-populated with hotels and has an important tourism infrastructure, making it perfect as a base of operations from which to visit the surrounding Almería coast as well as for peaceful days on the beach and visits to its attractions. Designed within a tourist enclave of renowned prestige, the marina is positioned beside holiday spots such as Playa Serena and Las Marinas and close to emblematic places such as the Castle of Santa Ana or Almería city's Alcazaba.

Moorings	764
Maximum length	25 m.
Min / max draft	4,5 m.
VHF Channel	9
Nautical chart	459
Torre de Control, s/n 04720 Aguadulce (Almería) T. +34 950 34 15 02 / +34 606 50 45 20 contacto@puertoaguadulce.es www.puertodeportivoaguadulce.es Almería's Airport - 31 km	

- | | | |
|---------------------|-----------------|-----------------|
| Fuel | Drinking water | WiFi |
| Bathrooms | Laundry | Crane/lift |
| Rubbish collection | Nautical sports | Commercial area |
| 24-hour security | Electricity | ATMs |
| Showers | Hoist | Wintering |
| Used oil collection | Other sports | Restaurants |



Nautical Activities

The marinas included in Marinas of Andalusia organise many sports activities related to sailing and the sea: yachting, regattas, boat trips, charters, diving and scuba diving, boat rental, recreational fishing, etc.

The excellent weather conditions at all 16 Andalusian leisure ports allow for all sorts of events and nautical activities to be arranged and enjoyed all year round.

If you wish to stay fully informed and learn about the full range of activities available at each port, as well as its calendar of events, we recommend a direct visit to its website.

40'

46°35'W

30'

25'





MARINAS DE ANDALUCÍA

Asociación de Puertos Deportivos



Marina Duquesa



Marina Estepona



Puerto Deportivo de Fuengirola S.A.M.



Marina del Este

